



Clutch / XTend type

(with automatic adjustment springs that **cannot be seen** from the outside)

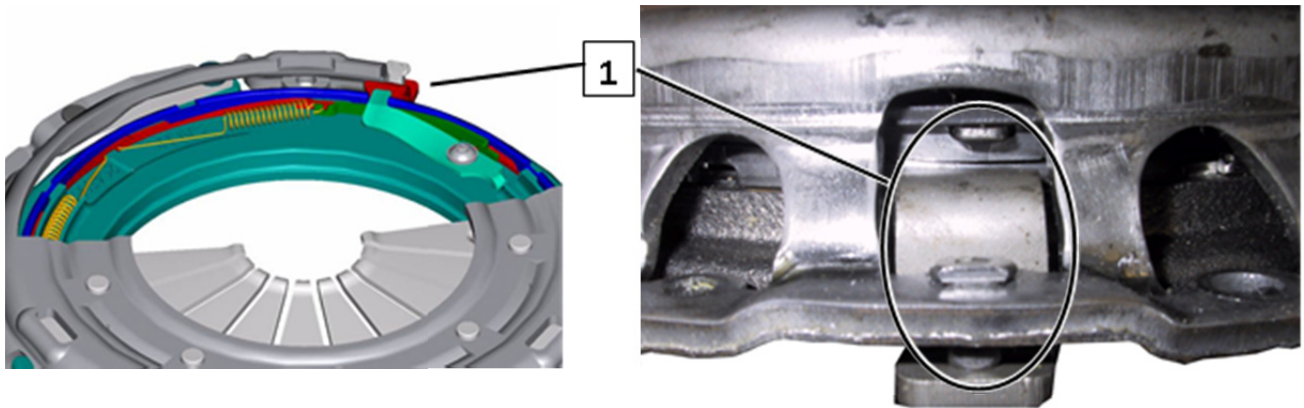


Fig. 1: The housing stop is not fixed in the delivery condition. When screwing the clutch pressure plate onto the flywheel the catch is locked and is fixed thereafter.

1 Housing stop



Fig. 2: All Xtend clutches are marked with the suffix code symbol **E**, for example: M 240 E



Fig. 3: Clamping device with centering pin

Manufacturer and source: KLANN Spezial-Werkzeugbau-GmbH, www.klann-online.de

NOTICE

Re-use of XTend pressure plate:

The housing stop (1) must lift-off from the clutch housing. This may require slight pressure. If the clutch housing stop is not loose, it will trigger the adjustment mechanism. It can then no longer be reset.



Clutch / type SAC

(with automatic adjustment springs **that are visible** from the outside)

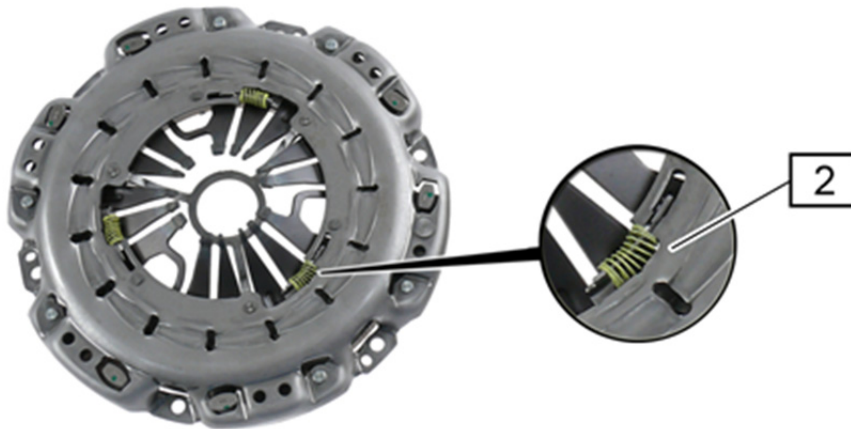


Fig. 4: Without locking piece

2 Automatic adjustment springs

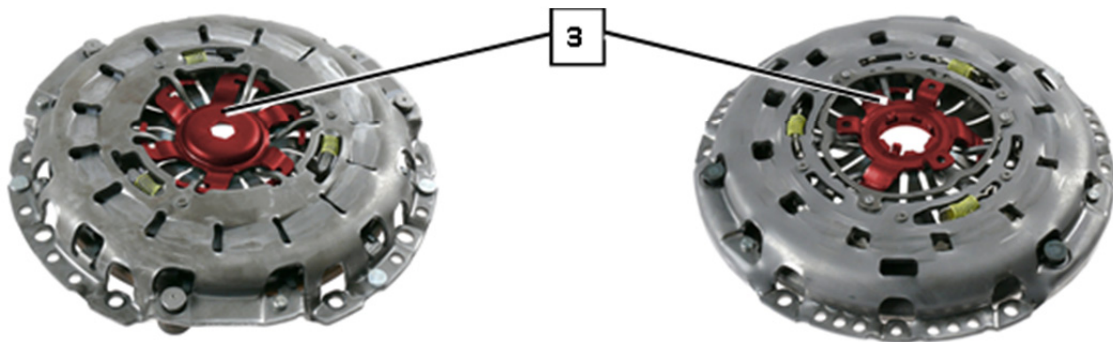


Fig. 5: With locking piece (BMW)

Fig. 6: With locking piece (Audi, SEAT, Skoda, VW)

3 Locking piece



Before installing the clutch disk, check its lateral run-out: max. 0.5 mm.

Clutches with a locking piece (3) are centered by using a special centering pin. Remove the locking piece (3) only **after** assembly! (Fig. 5 and Fig. 6)

We recommend replacing the pressure plate, clutch disk and release device at the same time.

To prevent functionality problems, such as disengaging problems or judder, following the installation of a self-compensating clutch, please note the following:



Be careful when handling the clutch, otherwise the factory settings can be changed.

For the installation and dismantling of the self-compensating pressure plate without a locking piece, use the clamping device with the centering pin (Fig. 3). This will prevent housing distortion and also pedal pulsation and uncontrolled adjustment.



www.zf.com/serviceinformation